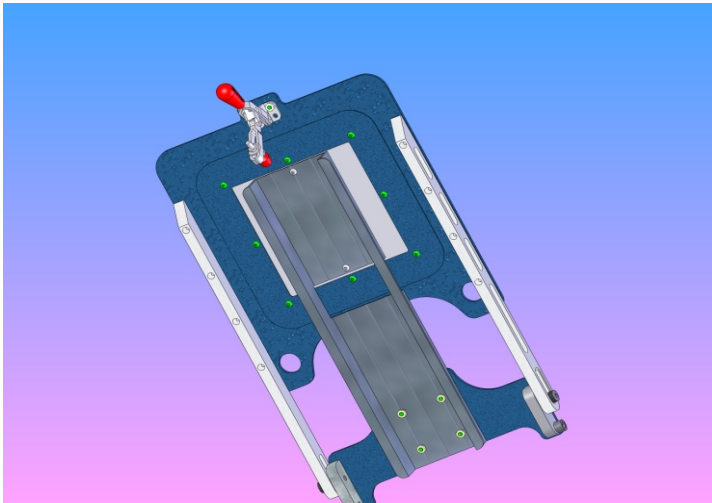


Shorts Hold Downs



The SHD is for printing on 2 ply nylon mesh gym shorts and other similar 2 ply material. 2 ply material is a challenge because the traditional method of using spray tack to hold the material in place will not work.



The SHD comes completely assembled and ready for production. There's no off-contact change in this assembly and mounts onto your press like a regular pallet.



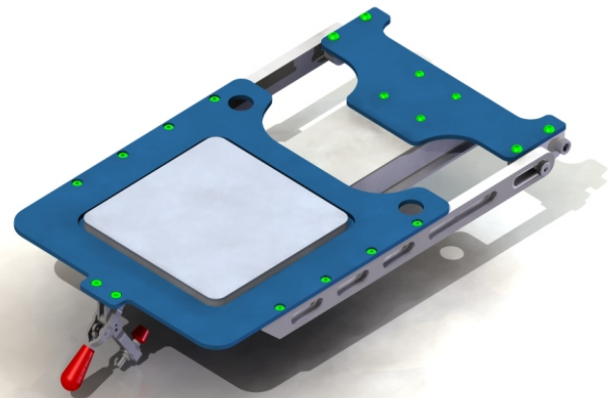
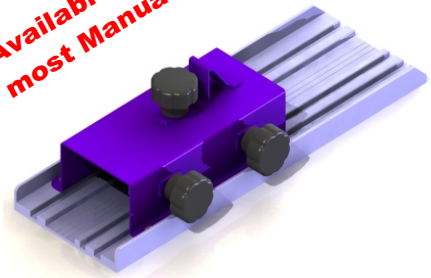
**Available
Sizes**

7.5 x 7.5

How to Load

The operator pulls the red handled clamp outward and is then able to lift the head frame up. The head frame slides backwards slightly and locks in the lifted position. The printed garment can then be removed and placed on the dryer belt. The next garment is then loaded. The operator pulls slightly on the head frame, allowing it to lower. The red handled clamp is pushed in and the frame securely grips the 2 ply material into place.

*Available for use with
most Manual Machines*



Distributed By: