

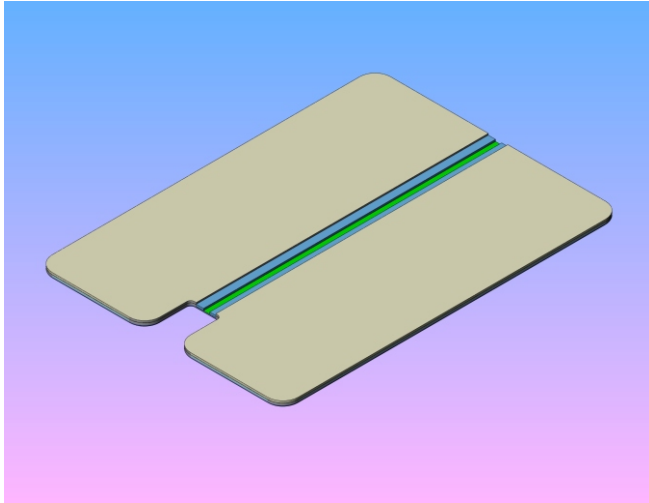
Zipper Hoodie Pallets



- ⊕ Pallets
- ⊕ Squeegees
- ⊕ Floodbars



The Zipper Hoodie easement Pallet was developed to improve the quality of printing over zipper and hem assemblies. The solid aluminum and rubber pallet has a slot machined down it's center to allow the zipper to drop just enough.



Action Engineering offers the Zipper Hoodie Pallet in several sizes. The most popular is the 16 x 22. For Manual Machines, such as Workhorse & Hopkins, the most common size is a 16 x 18.

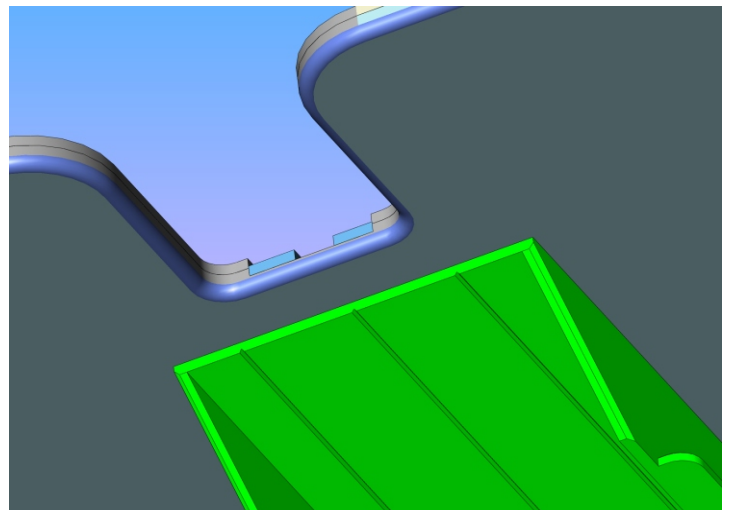
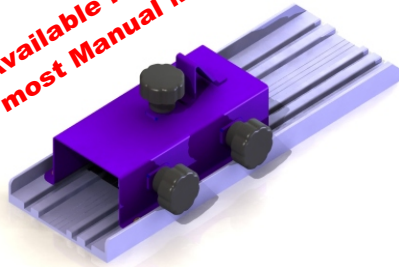
What's the challenge? The challenge with printing zipper hoodies is the zipper because the zipper will interfere with the print. What's needed is for the zipper to drop into a slot allowing it to rest at the same height as the print surface. We have carefully measured many samples of the hoodies and optimized our slot geometry.

If you're trying to accomplish an absolutely flawless over the zipper print, then this design is a must. The ZH Pallet has a two-tier slot down the middle. One tier is easement for the zipper hem, and then a deeper easement for the zipper.

**Available for use with
All Automatic Machines**



**Available for use with
most Manual Machines**



**Available
Sizes**

12 x 16
16 x 18
16 x 22
18 x 22
20 x 22

Distributed By: